

MEMBERSHIP ADVANTAGES



PREPARING PEOPLE TO LIVE & WORK SAFELY EVERY DAY!

*WE ARE THE RECOGNIZED LEADER IN SAFETY EDUCATION AND RELATED SERVICES,
EMPOWERING OUR MEMBERS AND THE COMMUNITY TO PREVENT INJURIES, SAVE
LIVES AND ACHIEVE A CULTURE OF SAFETY EXCELLENCE.*

Great Lakes Safety
Training Center 



WELCOME TO GREAT LAKES SAFETY TRAINING CENTER!

At the Great Lakes Safety Training Center (GLSTC), a 501c (3) organization, “Preparing People to Live and Work Safely Every Day” is our mission. Founded as a volunteer organization in the 1950’s and incorporated in 1989, GLSTC has grown into an organization that offers a surprising array of classes and services to over 260 member companies.

Why consider joining us? Let our members tell you!



“We’ve been members with GLSTC since the beginning, and their **QUALITY** of instruction is fantastic. Their instructors are experts and the training is top-notch.”
- Mike Parsons, (Retired) Owner, Valley Electrical



“I can’t say enough about how easy, **AFFORDABLE** and convenient using GLSTC has been for Chippewa Nature Center. Of course, the primary benefit is the quality of the instruction, but we also receive value in the classes.”
- Dick Touvell, (Retired) Exec. Director, Chippewa Nature



“I love knowing that GLSTC knows ME. Being local and immersed in our communities, they know my needs, our dynamics, and our economic trends. They have a **LOCAL EXPERTISE** that is so beneficial.”
- Sharon Miller, Owner/President, ITH Staffing of MI

We’re proud of what we do, what we offer, and the chance to play our role in creating safe communities. Thank you for considering becoming a partner and helping us realize this goal!



Kelly Juday
Executive Director
Great Lakes Safety Training Center





WHAT DO WE OFFER?

Great Lakes Safety Training Center provides workplace/occupational safety training and safety services to promote safe communication and business throughout our region and beyond.

Your initial \$375 investment as a **Great Lakes Safety Member** includes the following **services, benefits, and more!** **Don't wait!**

OUR SERVICES

Instructor-led and Hands-on Training

Utilizing our state-of-the-art Hands-on Lab, our training provides real world experiences. This, combined with instructor-led classroom learning increases retention.

Online Safety Courses

We offer access to over 100 on-demand courses through our website 24/7! Courses include OSHA, DOT, CMV, Human Resources, and more!

Background Checks and Security Screening

We provide the most efficient, fast, customized, and highly automated background screening services available.

Safety Plan Audits and Consultations

Our expert team can work with you on compliance, abatement assistance, safety plan review or development, and consultation on any safety need.

Customized Training Development

Our experts can design a safety training curriculum that meets all of your safety needs!

Safety Data Management Tools

Our Learning Management System (LMS) provides centralized record keeping for all training, background screenings, and more.

Site Safety Support

We offer highly qualified and experienced safety professionals for short and long term projects at your site(s).

In a recent study, **94%** of our members **strongly agree/ agree** that we provide **quality, value, diverse training offerings, and expert knowledge** of our communities!



TOP

10



Member Benefits

When you secure a membership with Great Lakes Safety you will receive . . .

1

Discounts on training, consulting, and safety services.

2

Access to our Hands-On Training lab, stocked with state of the art equipment, where employees simulate confined space entry & rescue, fall protection/prevention, Hazwoper training, and much more!

3

Premium access to our secure online Learning Management System, giving you 24/7 access to customized training reports, records, and data.

4

Highly qualified instructors and consultants to assist with your compliance needs and safety plan development.

5

Information delivered to your inbox. We provide a monthly safety newsletter to keep you up-to-date on upcoming trainings, safety news, tips, and trends.

6

We keep you *connected and current*. GLSTC provides networking opportunities, other regional safety events, and an annual safety celebration meeting with a nationally-known keynote speaker.

7

Discounted pricing on all online training institute courses, such as DOT, OSHA, Commercial Motor Vehicle, and many more!

8

Access to over 400 *free safety videos* in our video library, available on our website.

9

Invoicing on *YOUR terms*. Instead of pre-payment for classes and services, GLSTC members can be invoiced for safety service.

10

We care about your family. With the “Safety for the Kids” program, we provide scholarships to students pursuing a certification/degree in a trade, construction, manufacturing, or engineering with an emphasis on safety in the Great Lakes Bay Region.



COMPANIES THAT CARE, THRIVE.

“Why do we practice safety in the workplace?”

The way a company responds to this question is telling:

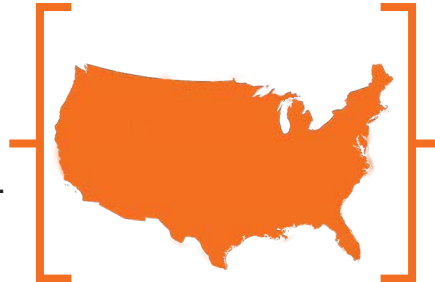
Companies that **CARE** tend to say:

- “Our people are our priority.”
- “We care about our employees and we have a responsibility to keep them safe.”

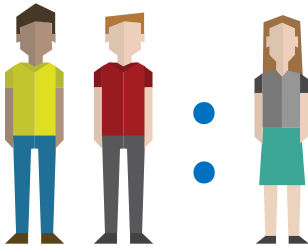
Companies that care **about** their employees, care **for** their employees. Be a company that **THRIVES**. Partner with GLSTC and invest in a strong safety program to ensure your people get everything they need.

DID YOU KNOW?

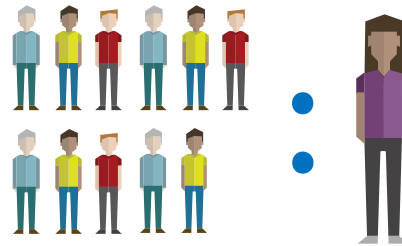
There are around **6,371** job-related injury deaths and . . .



Around **13.3 million** non-fatal injuries occur in workplaces in the U.S. in **one** year.



Men are more likely than women to get hurt at work by a ratio of **2:1**



Men are more likely to die as a result of a work injury by a ration of **11:1**

The occupations that yield the highest death rates are:



Laborers



Truck Drivers



Taxi Drivers





AVAILABLE SAFETY TRAINING COURSES AT GLSTC

- Aerial Lift/ Elevated Work Platforms
- American Red Cross CPR/First Aid/AED
- Arc Flash Awareness
- Asbestos Awareness
- Certified Occupational Safety Specialist (COSS)
- Competent Person Fall Protection
- Confined Space Entry & Rescue
- Construction Maintenance Training
- Delivery Training
- Fall Protection
- Fire Extinguisher
- Fire Watch
- Fork Truck Operation
- Hazwoper Series: 40, 24, & 8 hour
- Lead Safety for Renovation, Repair, and Painting
- Leadership Institute
- Lock-Out/Tag-Out
- Office, Service and Lab Training
- OSHA Construction & Gen. Industry: 10 & 30 Hour
- OSHA Education Host Site
 - OSHA 500 Level Train the Trainer Courses
 - Various OSHA specific trainings - visit www.emu.edu
- Scaffold User & Competent User
- Site Safety Representative - Specific to Site
- Site specific courses for:
 - Dow Chemical
 - Nexteer
 - SC Johnson
- Sologic: Root Cause Analysis

We have many more training options available. Call us to customize training to fit your needs!





GLSTC CULTURE AND CORE VALUES

We value **Integrity** and **Professionalism** in all that we do. We treat each other and our customers with respect and dignity. We strive to always do what is right and ethical. We follow through, doing what we say we are going to do, and taking ownership of the organization. We are positive ambassadors for GLSTC in our community.

We are **Creative and Innovative** in finding solutions and we **Embrace and Drive Change** as we seek new ways of working, solving problems, and managing growth. We always “find a way” and go the extra mile to make good things happen.

We **Deliver WOW Service** to our clients and each other. We are timely and responsive in answering inquiries. We put the customer first and seek ways to help our customers be successful. We are welcoming, friendly and approachable with each other and our customers.

We **Communicate Positively** internally and externally. We build open and honest relationships, listening for clarification and understanding. We speak positively about our coworkers, customers and the organization and do not tolerate any negativity. We constructively and professionally deal with conflict.

We **Build a Positive Team Experience**. We recognize that the success of the team depends on the members and how well they work together. We help each other be successful and celebrate the success of individuals and our team. We back team members up when they are overloaded or stressed. We have each other’s back and we never throw team members under the bus. We take time to get to know one another and respect team member strengths and differences.

We have **Passion** for what we do but make time to **Have FUN Safely!** We are friendly and work hard to promote an open and accepting work atmosphere. We use humor appropriately and seek ways to positively break up the day. We actively participate in team events and socials.





TRAIN ANYWHERE WITH OUR ONLINE TRAINING INSTITUTE!

GLSTC also offers online training. The Online Training Institute is set up with a guided tour, course catalog, and additional services to give you and your team more options to receive the training you need. It is all easily accessible at www.glstc.org.



ONLINE COURSES

Our Online Institute offers **over 200 courses**, to choose from in the following categories:

- Best Practices for CMV Drivers
- Cargo Securement
- CMV Driver/Motor Carrier Management
- DOT HazMat
- Environment, Health, & Safety
- Human Resources
- OSHA

Members will receive a 10% discount on all online training courses! Becoming a member will allow you access to all your transcripts 24/7.

Contact us today to receive your member discount code!



Visit:
www.GLSTC.org



THE HANDS-ON SAFETY TRAINING LAB

Experience real-world workplace scenarios in our Hands-On Safety Training Lab! We can provide classroom instruction and practical application, preparing your workers for real situations they may face on the job.

Hands-On Training has been shown to raise information retention up to 90% when added to our training materials, lectures, and safety videos. Learning by **doing** is a critical way to ensure employees retain their safety training.

We offer a variety of hands on training and simulations including:

- Aerial Lift
- Confined Space Entry & Rescue
- Fall Protection User and Competent Person
- Fire Extinguisher
- Fork Truck
- HAZWOPER Training
- Ladder Safety
- Lockout/Tagout
- Scaffold Safety

Don't see what you're looking for? Contact us for new upcoming trainings and while hands-on simulators; our programs are constantly evolving. Most training can be adapted to be conducted at your location.

Increase Knowledge Retention by 90%



GLSTC'S LEARNING MANAGEMENT SYSTEM

STAY CONNECTED!

Great Lakes Safety Training Center's Learning Management System (LMS) is **specifically designed** for our clients. This web-based tool will help you easily and efficiently administer and track your training and compliance.

GLSTC's LMS **will support you** with administration, documentation, tracking and reporting for both classroom-based and virtual training programs. It also allows for the management and tracking of background checks for employees.

This **easy-to-use**, streamlined system will centralize your record keeping for training and background checks. One of our most popular features is the ability to customize reports and filter data according to your individual needs.

BENEFITS OF LMS

- **Save time** by having direct access to our registration and background services
- **Initiate** background checks
- **Immediate access** to upcoming training
- **View data** on training and background checks
- **Direct email** expiration reports
- **Customized** reporting

WANT TO BE TRAINED?

GLSTC offers **FREE Member Administrator Training** on our LMS to all our member companies. Our LMS provides a powerful tool for you organization to get "front of the line" access to your employees' safety documentation.

Contact glstc@glstc.org to request a user name and schedule training.



GLSTC'S VALUED MEMBERS



ABM
Accenture
Accurate Safety Distributors Inc.
Ace-Saginaw Asphalt Paving Co.
Acoustic Ceiling & Partition
Acuren Inspections/US Inspection
Adecco E & T
Adecco O & I
Advanced Industrial Services
Advanced Safety Consulting
AECOM
Aerotek
Air Products and Chemicals, Inc.
Airgas Great Lakes
AKT Peerless
Alloy Construction
Amcomm Telecommunications Inc.
American Mitsuba Corporation
Aptar
Arcadis US Inc.
Arnold Center
Associated Builders & Contractors
AVI-SPL
Axion Logistics Ltd.
Badger Daylighting Corp.
Bandit Industries
Bay Area Water Treatment Plant
Bay Cast
Bay Group Ventures
Bierlein
Blasy Electric Inc.
Brandenberg Industrial Services
Brandle Roofing
BrandSafway Industries
Breitburn Operating, LP
Bri-Car Roofing
Cabot Corporation
Caravan Facilities Management
Cargill
Carrollton township
Case Systems Inc.
CBTS

CDI Engineering Solutions
CE Power Solutions, LLC
Central Asphalt, Inc.
Central Ceiling North
Champagne & Marx
Chippewa Nature Center
Choice Concrete Construction Inc
Cintas
Circle K
City of Midland
Clark Contracting Services
CleanNet Usa, Inc.
Clearbrooke Technologies
Compass Group
Compuvision Systems
Conti Corporation
Corrigan Moving Systems
Corteva
County of Midland
Covenant Occupational Health
CPI Engineering/Lubrizol
D & D Asphalt
Dean Boiler Inc.
Deloitte & Touche
Delta College Corporate Service
Detroit Dismantling
District Council 26
Diversified
Dobson Industrial, Inc.
Dow
Duperon Corporation
DuPont
Emerson Process Management Power
Enerfab, Inc.
ESCON Group
Everett Carpet Company
Fabiano Brothers
Fisher Contracting
Fisher Sand & Gravel
Fisher Transportation Co. Inc.
Forward Corp.
G.E. Insulation

GLSTC'S VALUED MEMBERS CONTINUED



GDI Omni, Inc.
Gemini Group
General Acid Proofing
Gerace Construction
Gladwin Tank Mfg.
Glazing Solutions, Inc.
Gohm Insurance Restoration
Grand Rapids Metrology
Grand River Construction
Great Lakes Bay Construction
Great Lakes Bay Health Center
Greater Michigan Construction Academy
Greater Midland Community Center
Harris Sheet Metal
Hayes Mechanical
HBC Specialized Contracting
HCL Technologies
Hemlock Semiconductor
Hoby's Contracting
Horizons Conference Center
Hydaker & Wheatlake
HydroChem
IDG USA LLC—Midwest Division
leuter Insurance
IFF
In2Gro Technologies LLC
Ingenuity IEQ
ITH of Michigan, LLC
J.E. Johnson
J. Ranck Electric
J.R. Heineman & Sons, Inc.
Jackson National Life
Jan X-Ray Service
Jergens Insulation
Jimco Fire Protection
JMC Electrical Contractor LLC
Job Site Services
John E. Green
Johnson Controls
Johnston Contracting
Joseph M Day Company
JR Automation Technologies, LLC
JSS Safety & Rescue
Kawkawlin Roofing
Kelly IT & Engineering
KnightFM
Koch Specialty Plant Services Inc.
Kochville Township
K-R Metals
L & W Supply
Lake Painting
Laskape Design & Landscape
Local 1098
Local 324 Int'l Union
Local 47—Int'l Assoc Heat & Furnace
Local 85
Lloyd's Cabinet Shop
M.A.P. Mechanical Contractors Inc.
MacAllister Rentals
Mag Insulation
Magnum Construction
Mainscape, Inc.
Mann's Painting
MCATF—Saginaw Training Fund
McDowell & Associates
McNally—Nimergood
Mears Engineering
Melling Products
Merrill Technologies Group
Mersen
Metal Arts Construction
Michigan Air Compressor Technologies
Michigan Specialty Coatings
Michigan Workforce, Inc.
Mid Michigan Pride Painting
Mid State Oil Tools, Inc.
Midland Center for the Arts
Midland Cogeneration Venture
Midland Compounding & Consulting
Midland County Habitat for Humanity
Midland Engineering
Midland Fence Company
Midland Glass Company
MidMichigan Health

GLSTC'S VALUED MEMBERS CONTINUED



Mike's Custom Tile Co.
Mike's Wrecker Service
Mistras Group
Modernistic
Moltus Building Group, LLC
Monarch Welding & Engineering
Murin Company
Murray Painting Company
Nalco Company
National Industrial Shop Coatings
National Roofing & Sheet Metal
NBS—Navigating Business Space
Newmark
Nexteer Automotive
Niles Industrial
Niles Plant Services
North American Dismantling Corporation
Northern Industrial Supply
OBR Cooling Towers, Inc.
Otis Elevators
Parsons Insulation, LLC
Pat's Gradall Service, Inc.
Pepsi Beverages Company
Pro-Tech Cabling
Pumford Construction
Pyramid Paving
Quantum Technical Services, LLC
R & R Ready-Mix Inc.
R L Bondy Insulation
R.B. Satkowiaks City Sewer
Railserve, Inc.
Rauhorn Electric
Remer Plumbing, Heating & Air Conditioning
Renew Valve
Republic Waste Services of N. MI
Robinson Industries
Rohde Bros. Excavating, Inc.
Ryan Incorporated Central
Saint-Gobain
S.C. Johnson
Schad Boiler
Schreiber Corporation

Scioto Services
Sebewaing Tool & Engineering
Sentinel Integrity Solutions
Sequin Lumber Company
Serenus Johnson & Son
ServiceMaster of the Tri-Cities
Servinski Sod Service
Servpro
Soil and Materials Engineers
Space, Inc.
Spence Brothers
Spicer Group
Stock Drilling, Inc.
Straus Masonry Inc.
STT, Inc.
Sugar Construction
Sulzer Tower Field Service
Sunbelt Rentals Inc
Superior Safety Services
Taplin Group
Team Industrial Services
Teikoku—USA
Teledyne Instruments, Inc.
Three Rivers Corporation
Ticon, Inc.
TK Elevator Toshiba
Town & Country Group
Tradesmen International, Inc.
Trane US, Inc.
Trinseo LLC
Trillium
TurbinePROs
Tweet/Garot Mechanical, Inc.
U.S. Sheet Metal
United Group Services, Inc.
US Trackworks, LLC
Valley Electric
Valley Steel
W. Soule & Company
Wade Trim
Wendling Sheet Metal
Whaley Steel Corp.

GLSTC'S VALUED MEMBERS CONTINUED



Windemuller Electric
Wolgast Corporation
Xaerus Performance Fluids
Xalt Energy
XPO Logistics Worldwide, Inc.



GREAT LAKES SAFETY TRAINING CENTER

BOARD OF DIRECTORS

President

Michael Erickson, MidMichigan Health



Vice President

Jason Hatfield, Nexteer Automotive



Treasurer

Mark Craig, Three Rivers Corporation

Secretary

Ronnie Neumann, Alloy Construction

Board Members

Alison Beatty, Dow Chemical

Jeff Berger, Covenant Healthcare

Roger White, National Industrial Shop Coatings

John Fisher, Fisher Contracting

Bryan Johnson, Dow Chemical

Jim Sears, Axalta Coatings Systems

Ryan Smith, G.E. Insulation

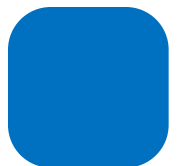
A NOTE FROM OUR PAST PRESIDENT



“As a GLSTC member for more than 30 years, Alloy has participated in many different services and I can sum up the benefits in two words: **culture change**. What does that mean? GLSTC has evolved from a facility that provides support to the members by way of safety training, to a “center” for members to **learn, share, and continuously grow** together.

This setting nurtures the mindset that everyone should go home in the same condition they came to work that morning. Side benefits - added **confidence and peace of mind** on the job and reduced insurance premiums for the members, as well as their customers, due to steadily reduced accidents. We are more than fortunate to have a training facility of this caliber right here in our back yard.”

- Ronnie Neumann, Alloy Construction



GREAT LAKES SAFETY TRAINING CENTER

STAFF



Kelly Juday
Executive Director



Melody DeBolt
Director of Operations



Jill Dougherty
Special Programs
Marketing Manager



Susan Schalk
Human Resources
Manager



Mike Sauve
Senior Safety Specialist



Marc White
Senior Safety Specialist



Doug Altenburg
Senior Safety Specialist



Greg Miller
Senior Safety Specialist



James McDaniel
Senior Safety Specialist



Taylor Metiva
Administrative Assistant to
the Director of Operations



Lynette Wisniewski
Bookkeeper/Customer
Service Specialist



Nicole Wallace
Background Administrator



Tricia Crivac
Accountant & Bookkeeper

GREAT LAKES SAFETY TRAINING CENTER

MEMBERSHIP APPLICATION



Company Profile

Company Name:		Date:
Website:		
Mailing Address:		
City:	State:	Zip Code:
Phone:		Fax:
Accounts Payable Rep:		
Phone:		Email:
CEO/President:		Email:

Contact Information

Primary Contact:		Email:
Position:		
Secondary Contact:		Email:
Position:		

*Note - All persons listed above will be added to GLSTCs email list.

General Information

Please provide a general description of your business:

Please check any facilities you may work in:

Dow I-Park Nexteer SC Johnson Hemlock Semiconductor Covenant Health
 MidMichigan Health Xalt Energy Other _____

Please check all services you are interested in:

Safety Training Background Checks CPR/AED Site Rep Safety Safety Consulting OSHA Training (EMU)
 Other _____



GREAT LAKES SAFETY TRAINING CENTER

MEMBERSHIP APPLICATION



Member Credit

Approved references will allow members an extension of 30 days of credit for billing purposes. Invoices that are more than 30 days over due will be assessed 1.5% (monthly) services charges. In the event of default, member companies are liable for all costs of collection, including attorney fees and court costs. Member companies with balances over 90 days overdue forfeit member benefits and will be required to re-apply.

Credit reference #1 Company Name:

Mailing Address:

City:

State:

Zip Code:

Phone:

Fax:

Credit Reference #2 Company Name:

Mailing Address:

City:

State:

Zip Code:

Phone:

Fax:

Credit Reference #3 Company Name:

Mailing Address:

City:

State:

Zip Code:

Phone:

Fax:

Payment

Membership Type:

Initial Membership \$375.00

Membership Renewal \$350.00

Payment Type:

Cash

Check

Visa

MasterCard

Discover

American Express

Credit Card Number:

CCV Number:

Name on Card:

Expiration:

Signature:

Terms & Conditions

By signing below I agree to the credit terms and authorize Great Lakes Safety Training Center to contact my credit references for account verification.

Signed:

Date:

Printed Name:

Title:

